

# ***The Geography of Social Inequality and Health***

*Danny Dorling, Sheffield, UK*

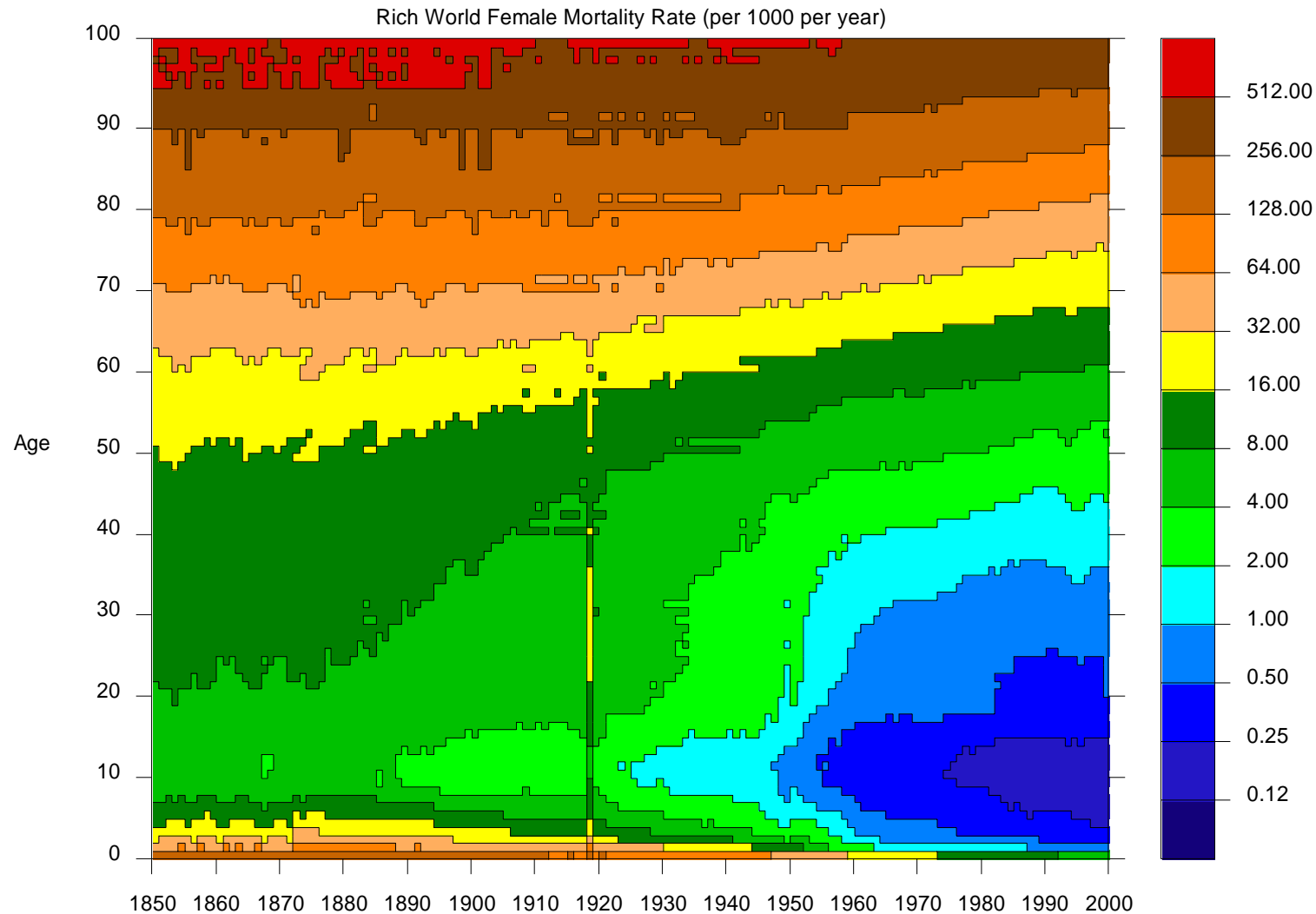
*Some statistical pictures of*

*The rich world,*

*the local,*

*and the global.*

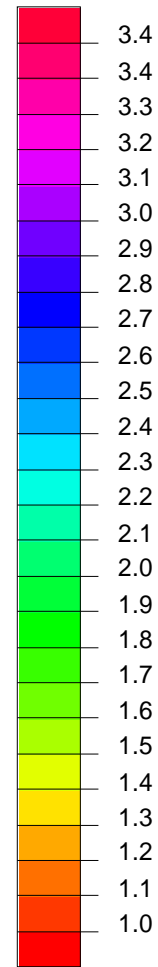
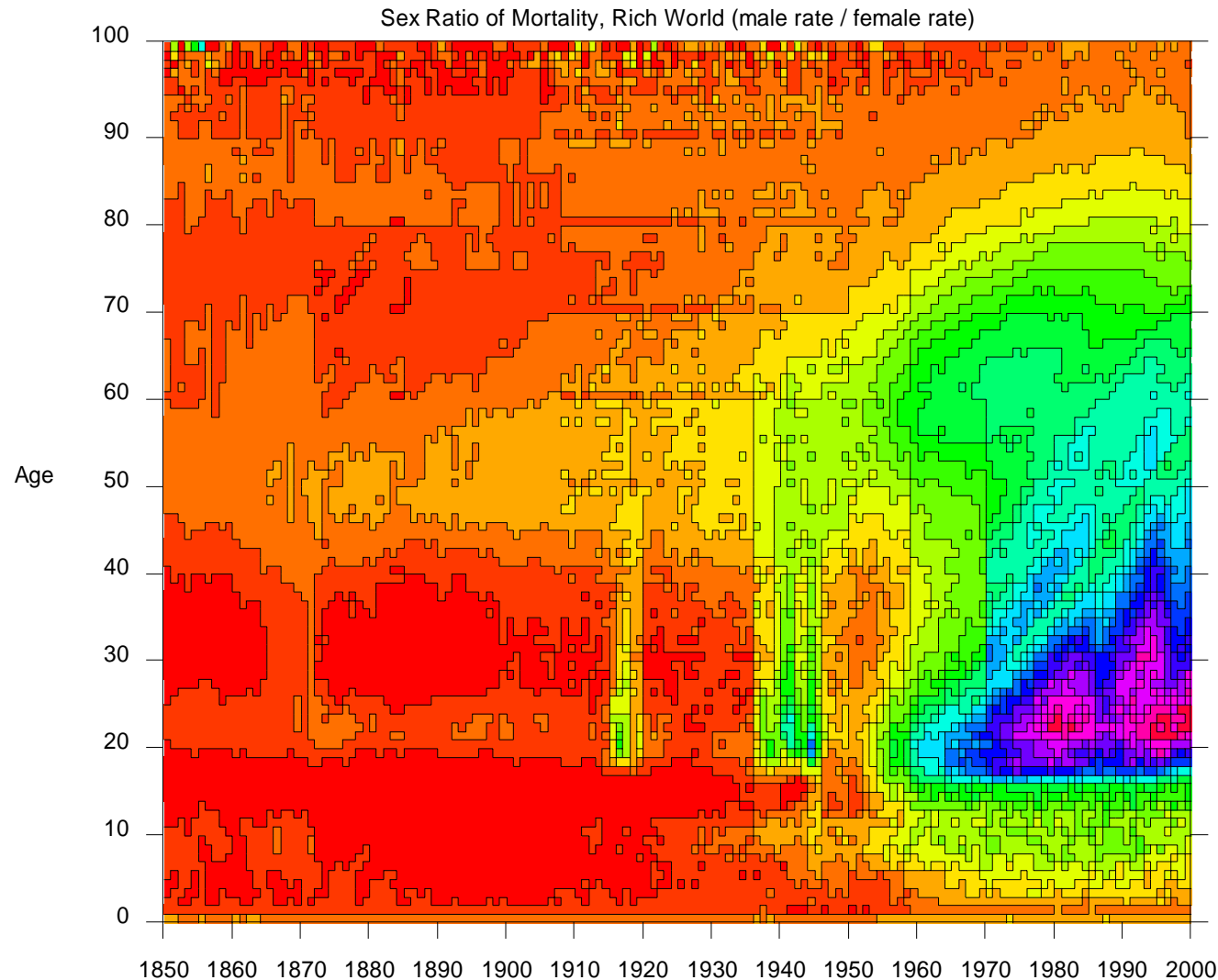
# Rich World Female Mortality Rates 1850-2000 (per year per 1000)



Source:  
Unpublished work  
with Jan Rigby  
(Sheffield)

Data: Human  
Mortality  
Database.  
University of  
California,  
Berkeley (USA),  
and Max Planck  
Institute for  
Demographic  
Research  
(Germany).  
Available at  
[www.mortality.org](http://www.mortality.org) or  
[www.humanmortality.de](http://www.humanmortality.de)  
(data downloaded  
summer 2004, all  
countries included  
here).

# Rich World Male/Female Mortality ratios 1850-2000 (per year per cohort)

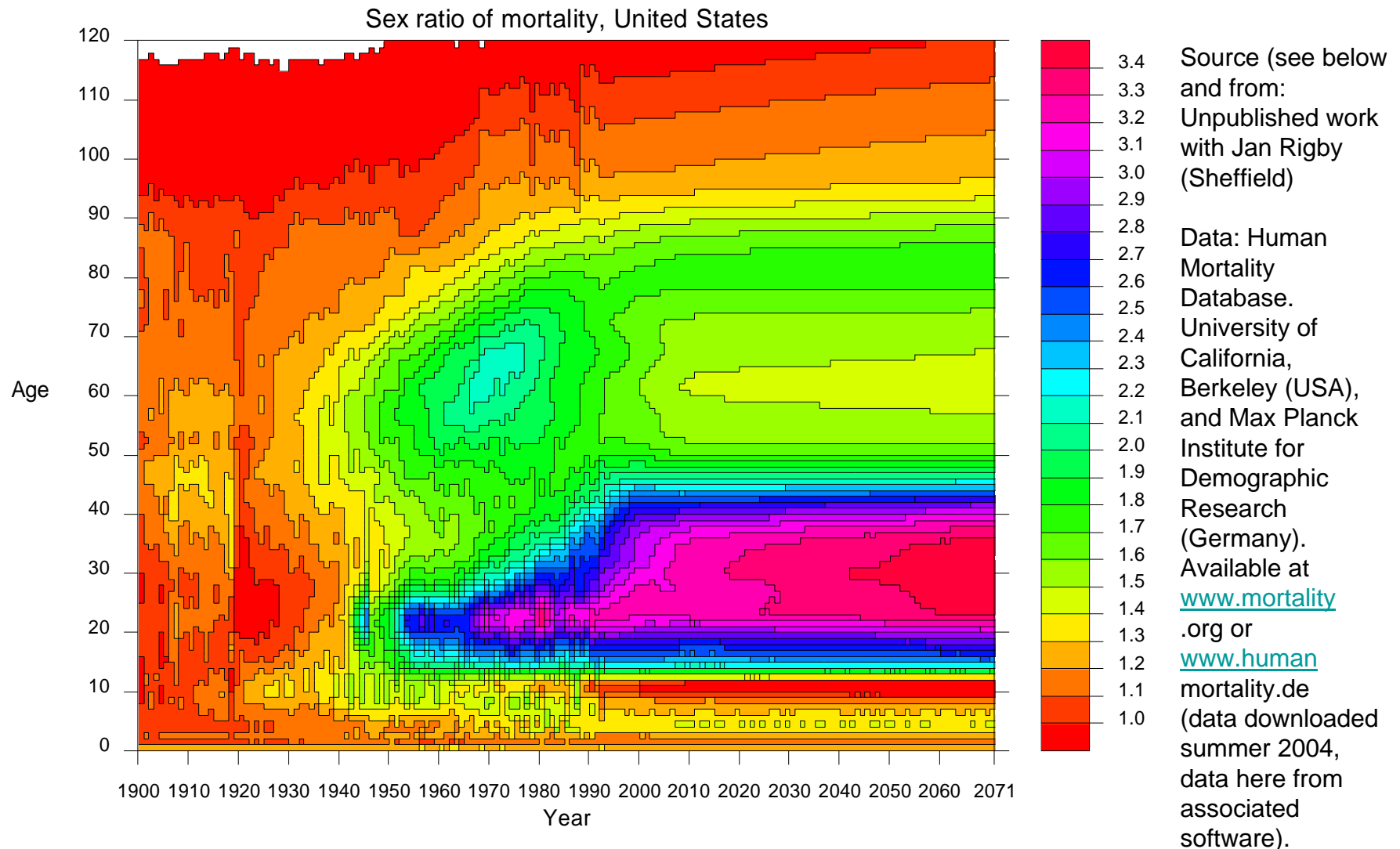


Source:

Unpublished work  
with Jan Rigby  
(Sheffield)

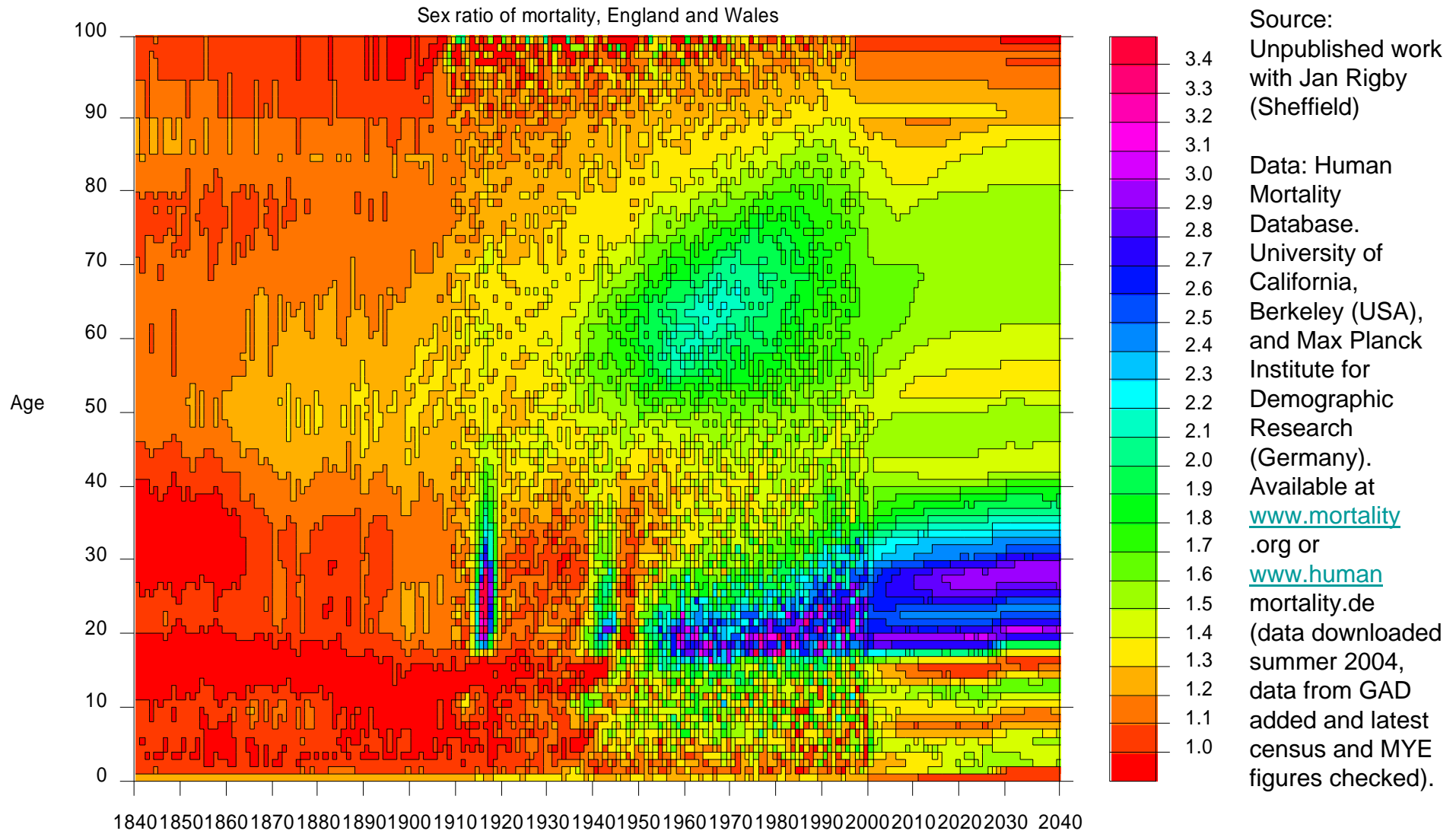
Data: Human  
Mortality  
Database.  
University of  
California,  
Berkeley (USA),  
and Max Planck  
Institute for  
Demographic  
Research  
(Germany).  
Available at  
[www.mortality](http://www.mortality.org)  
.org or  
[www.human](http://www.humanmortality.de)  
mortality.de  
(data downloaded  
summer 2004, all  
countries included  
here).

# USA Male/Female Mortality ratios 1900-2071 (per year per cohort)

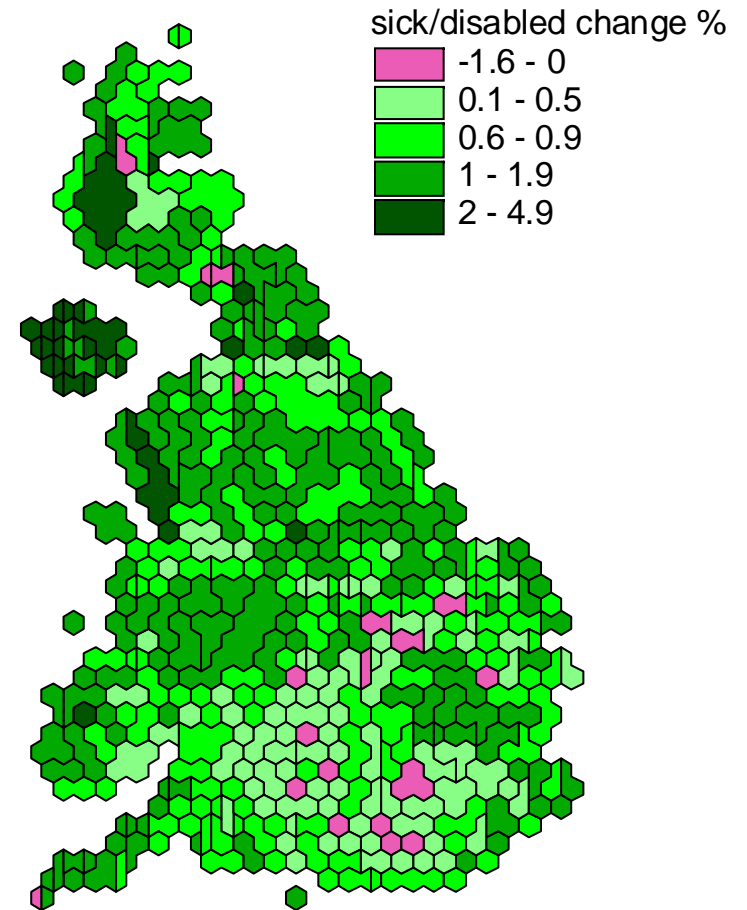
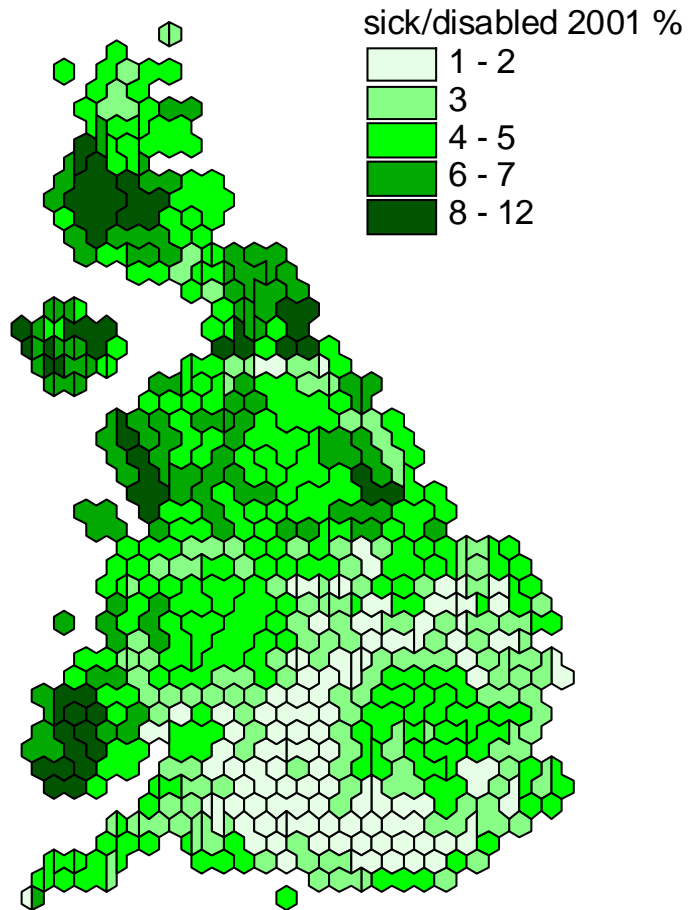


Source: Life Tables for the United States Social Security Area 1900-2080 by Felicitie C. Bell et al.

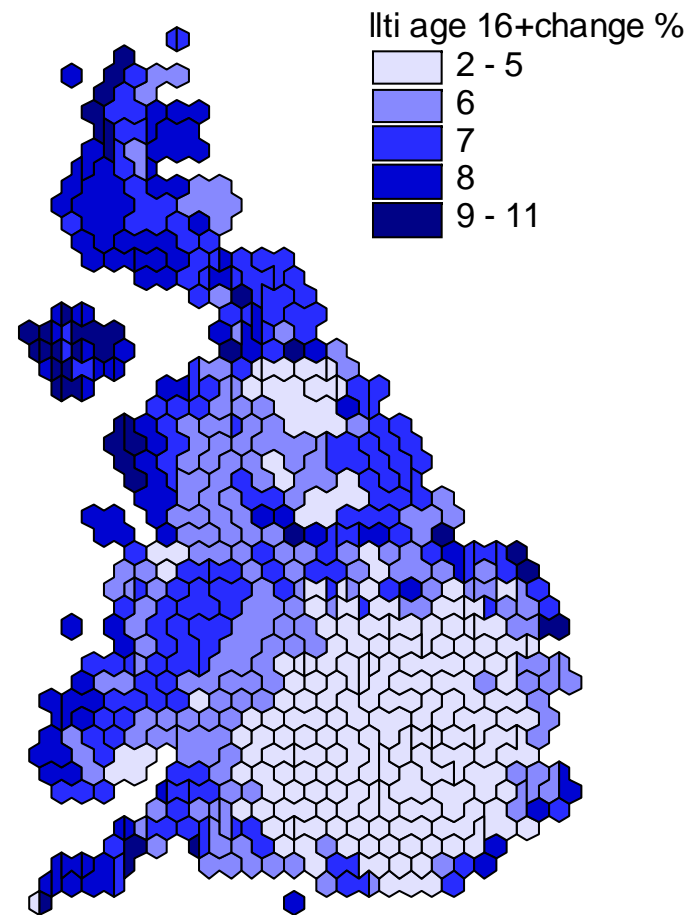
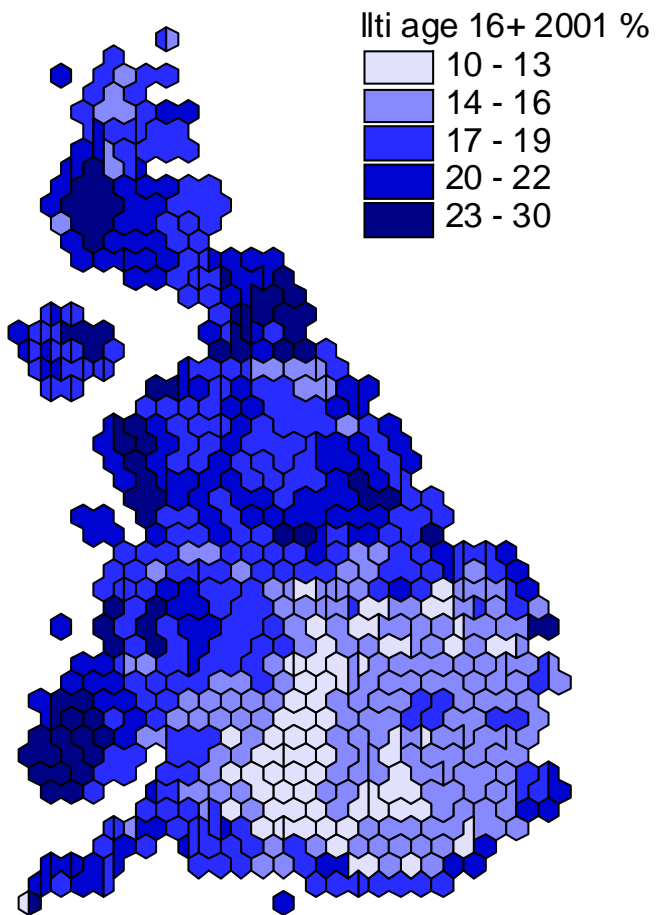
# England-Wales Male/Female Mortality ratios 1840-2050 (year/cohort)

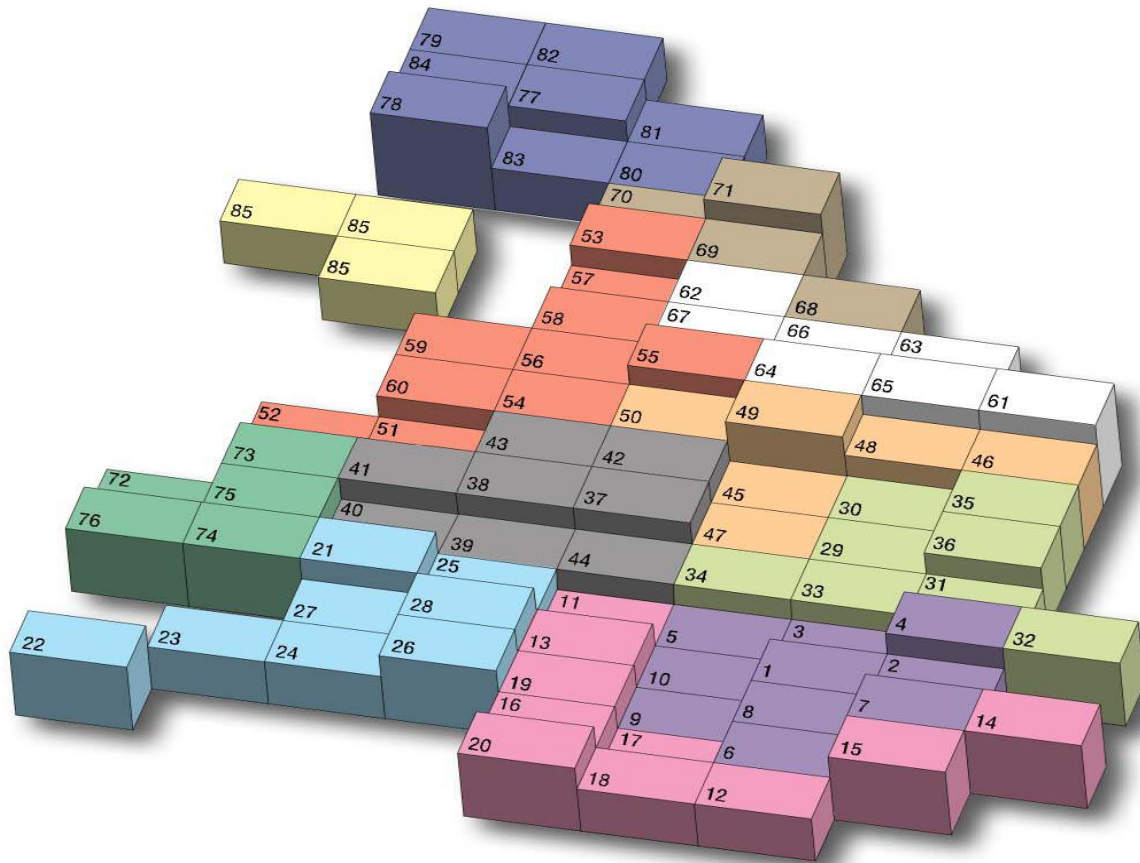


# sick/disabled



# Ilti 16+



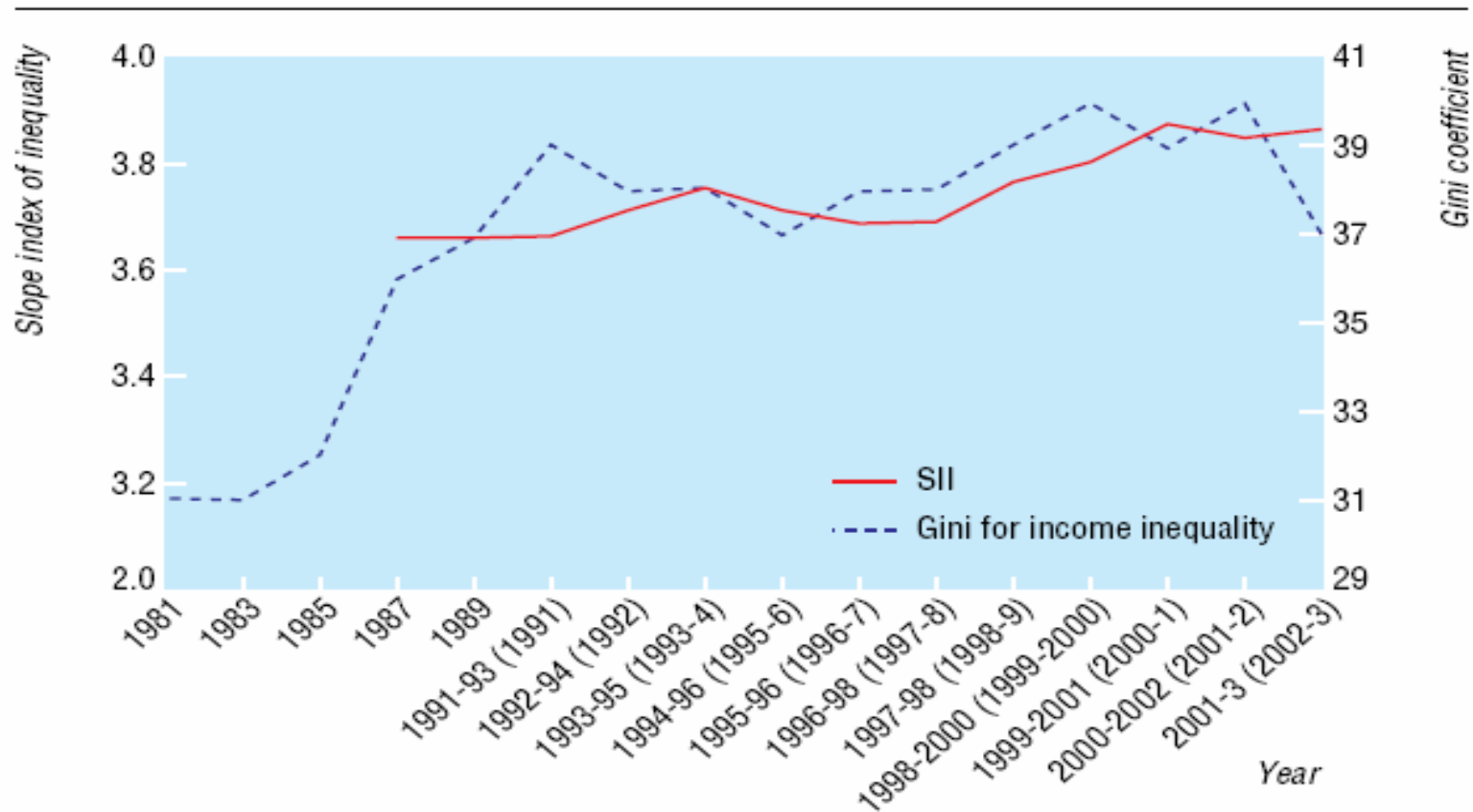


### Key to the Human Geography of the UK

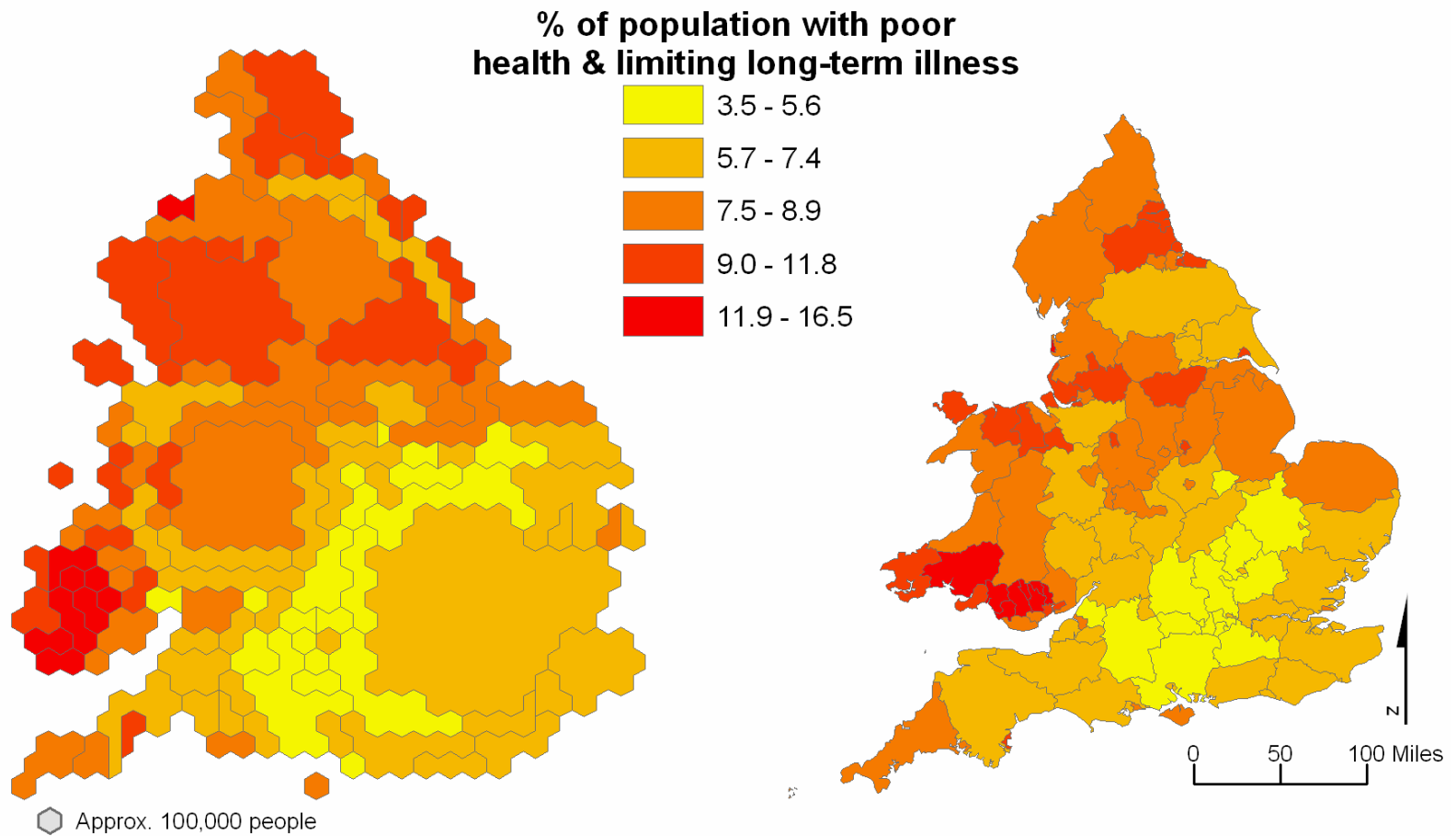
1	London Central	31	Essex North & Suffolk South	61	East Yorkshire & North Lincolnshire
2	London East	32	Essex South	62	Leeds
3	London North	33	Essex West & Hertfordshire East	63	North Yorkshire
4	London North East	34	Hertfordshire	64	Sheffield
5	London North West	35	Norfolk	65	Yorkshire South
6	London South & Surrey East	36	Suffolk & South West Norfolk	66	Yorkshire South West
7	London South East	37	Birmingham East	67	Yorkshire West
8	London South Inner	38	Birmingham West	68	Cleveland & Richmond
9	London South West	39	Coventry & North Warwickshire	69	Durham
10	London West	40	Herefordshire & Shropshire	70	Northumbria
11	Buckinghamshire & Oxfordshire East	41	Midlands West	71	Tyne & Wear
12	East Sussex & Kent South	42	Staffordshire East & Derby	72	Mid & West Wales
13	Hampshire North & Oxford	43	Staffordshire West & Congleton	73	North Wales
14	Kent East	44	Worcestershire & South Warwickshire	74	South Wales Central
15	Kent West	45	Leicester	75	South Wales East
16	South Downs West	46	Lincolnshire	76	South Wales West
17	Surrey	47	Northamptonshire & Blaby	77	Central Scotland



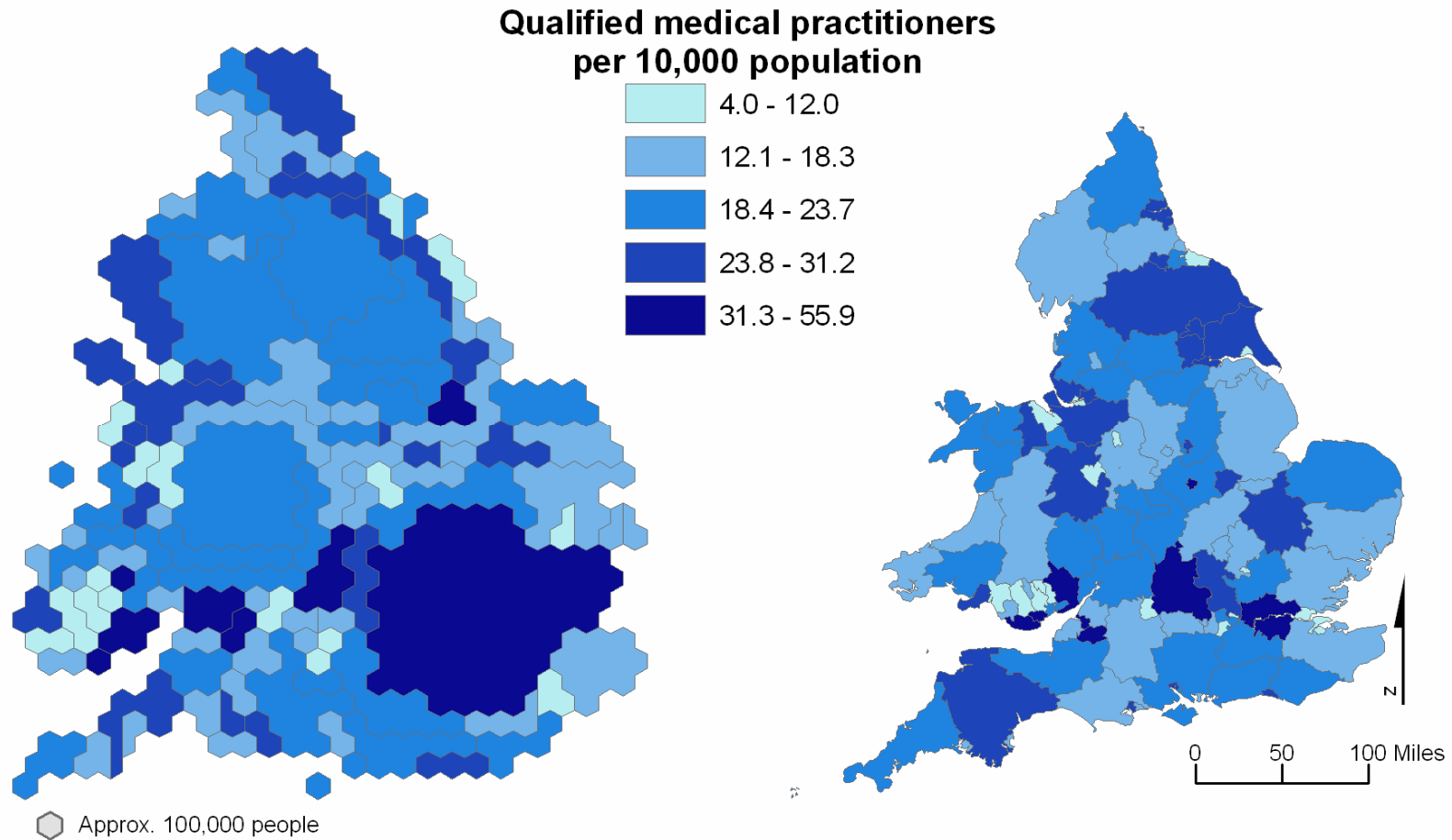
# Trends in UK inequalities (LE & y)



# Demand for the health industry

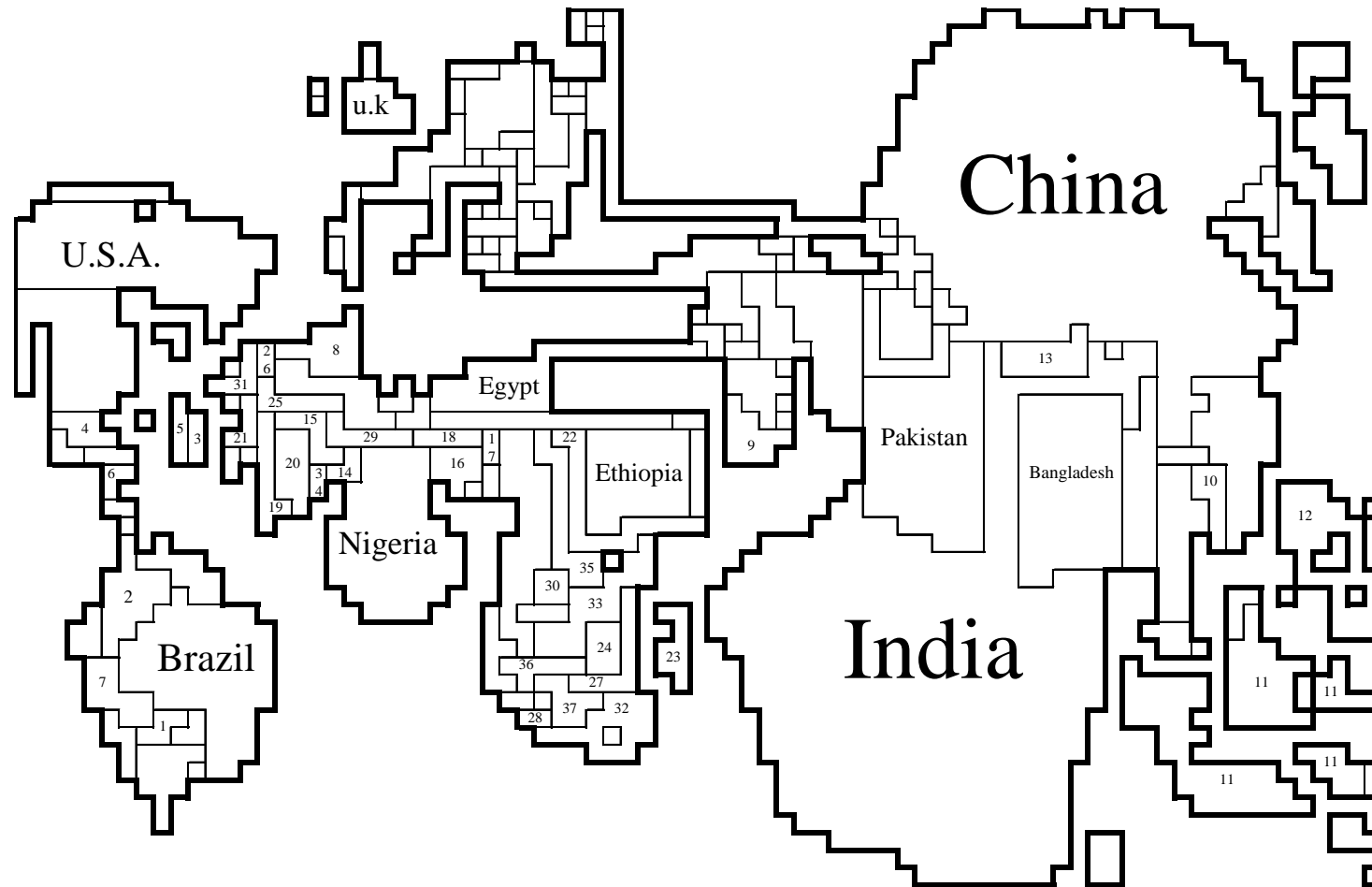


# Supply for the health industry



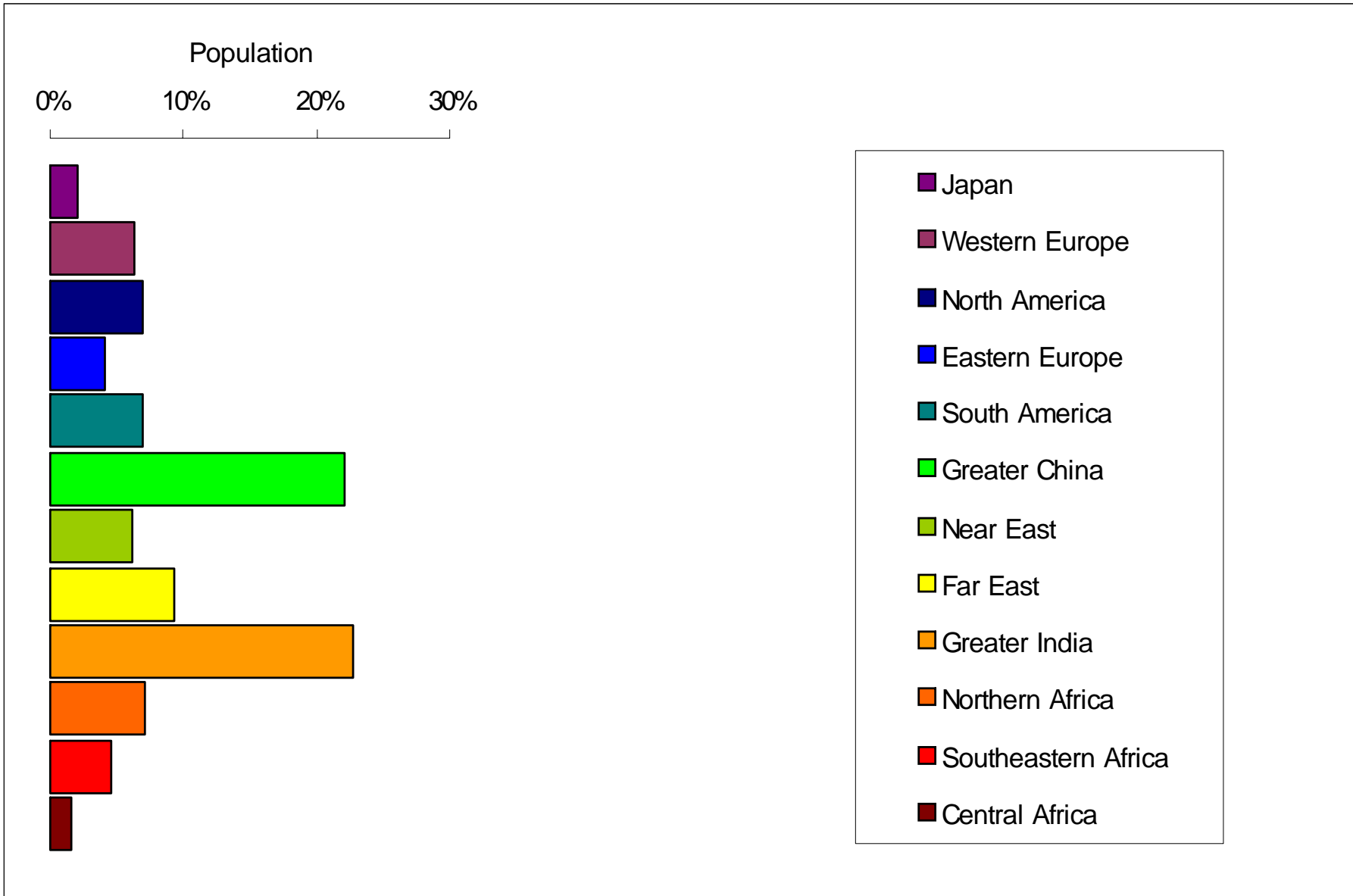
# A global context – the world's children

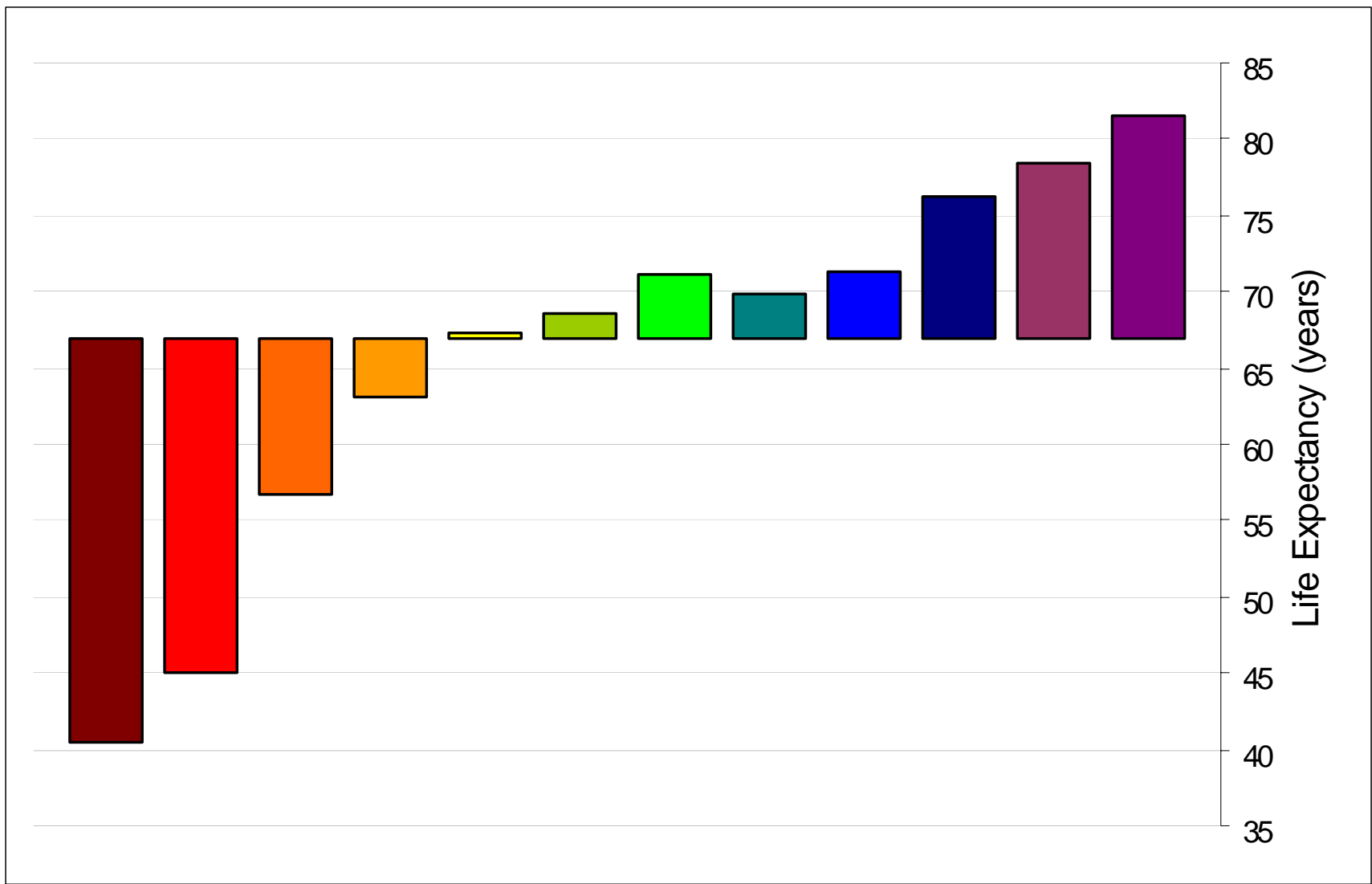
Figure 3.1 A different view of the world - its children in 2001

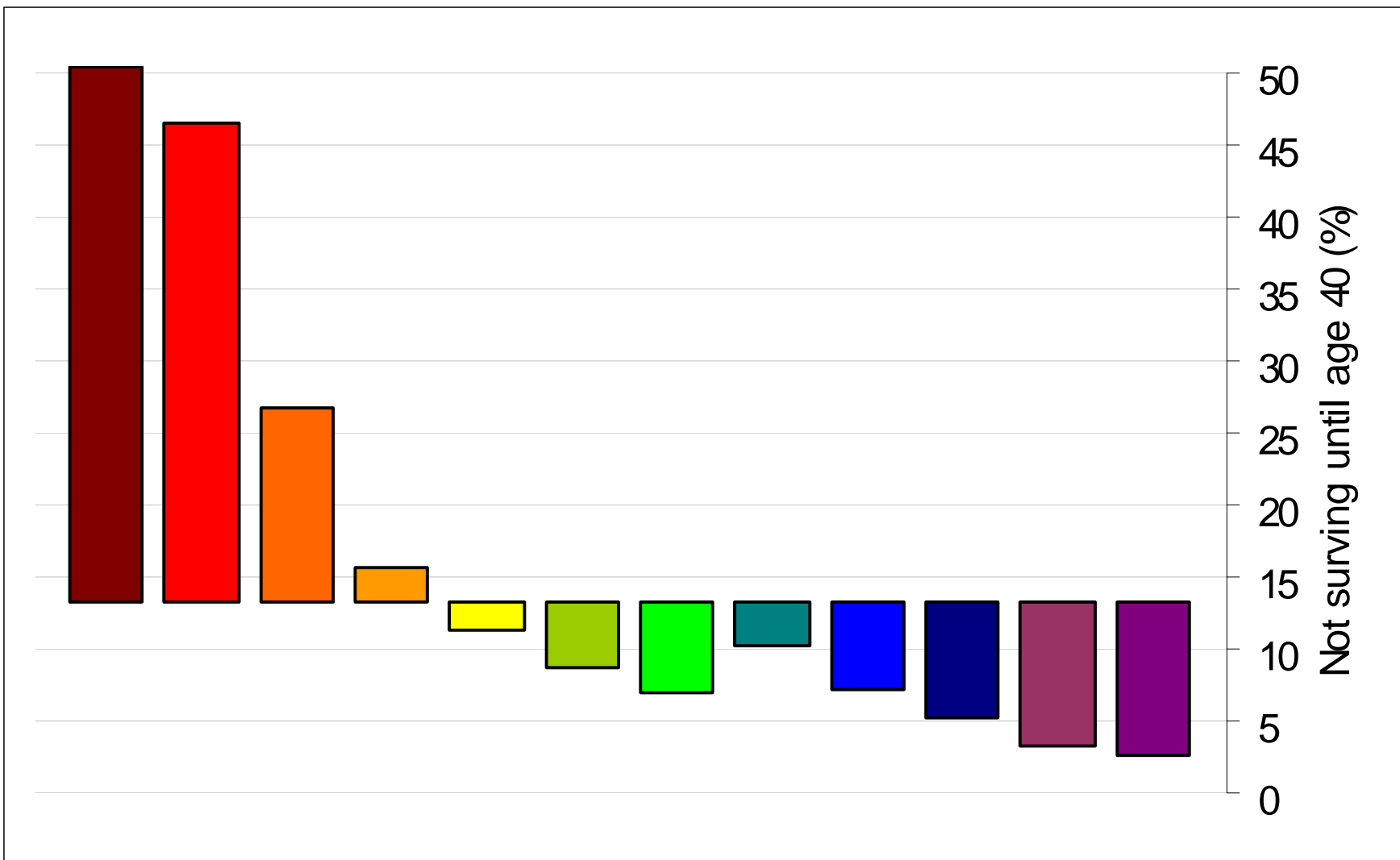


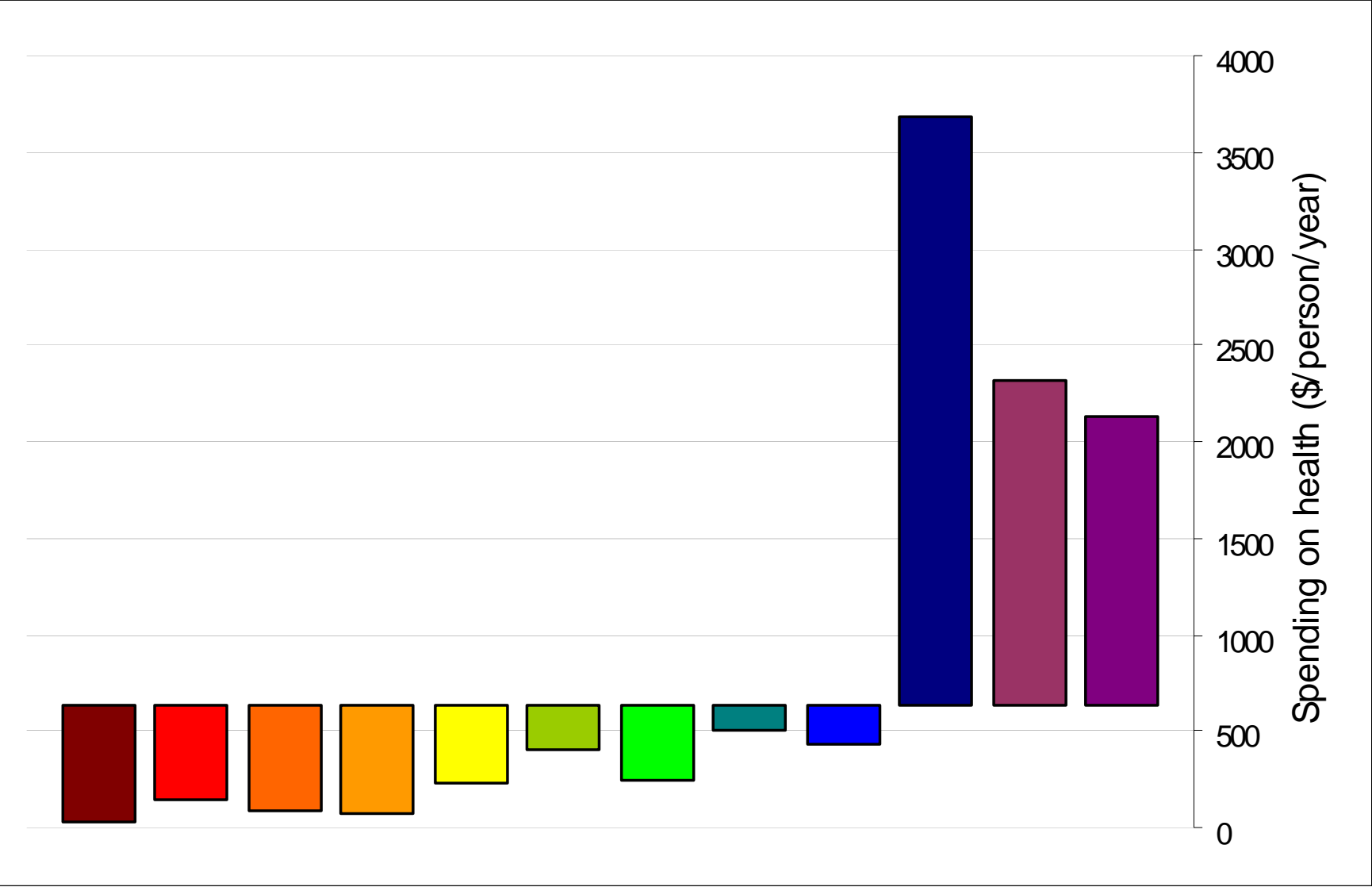
*Each square in the map contains one million children aged under 18 as recorded as living by the United Nations in 2000. National borders are shown. Other than the UK and USA countries named or numbered were surveyed and so are shaded below.*

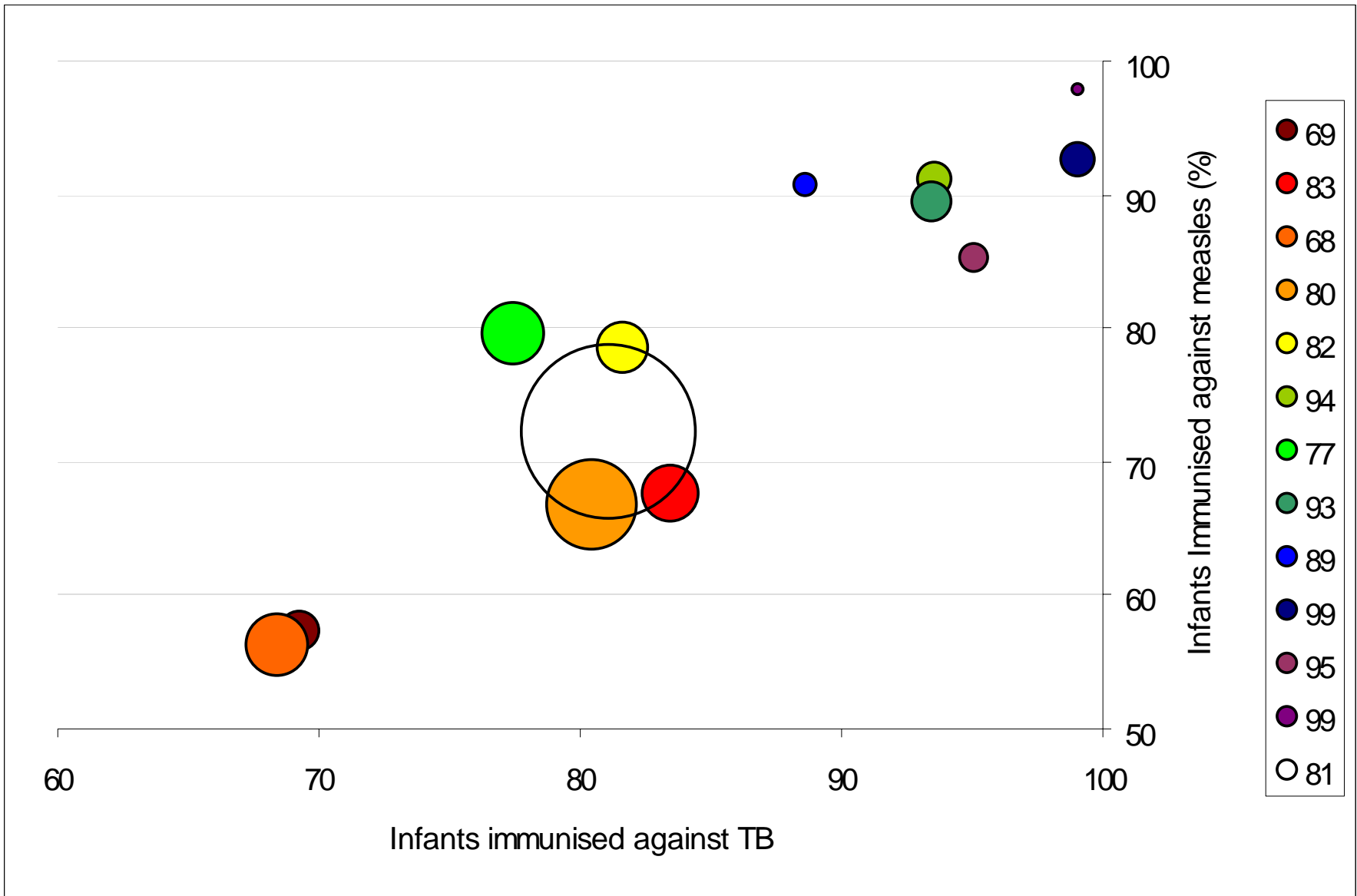
Source: Human Geography of the UK, London: Sage, February 2005



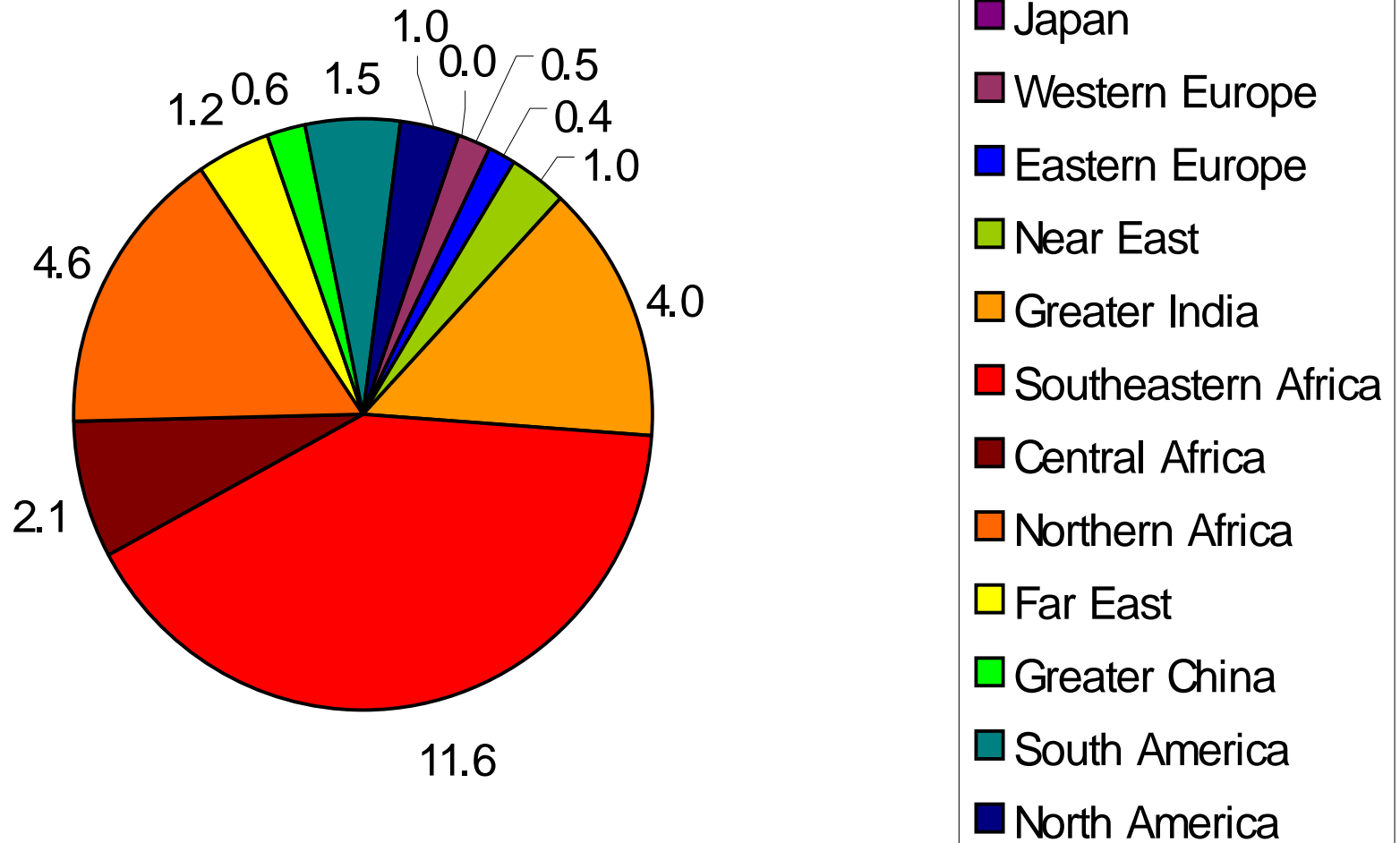




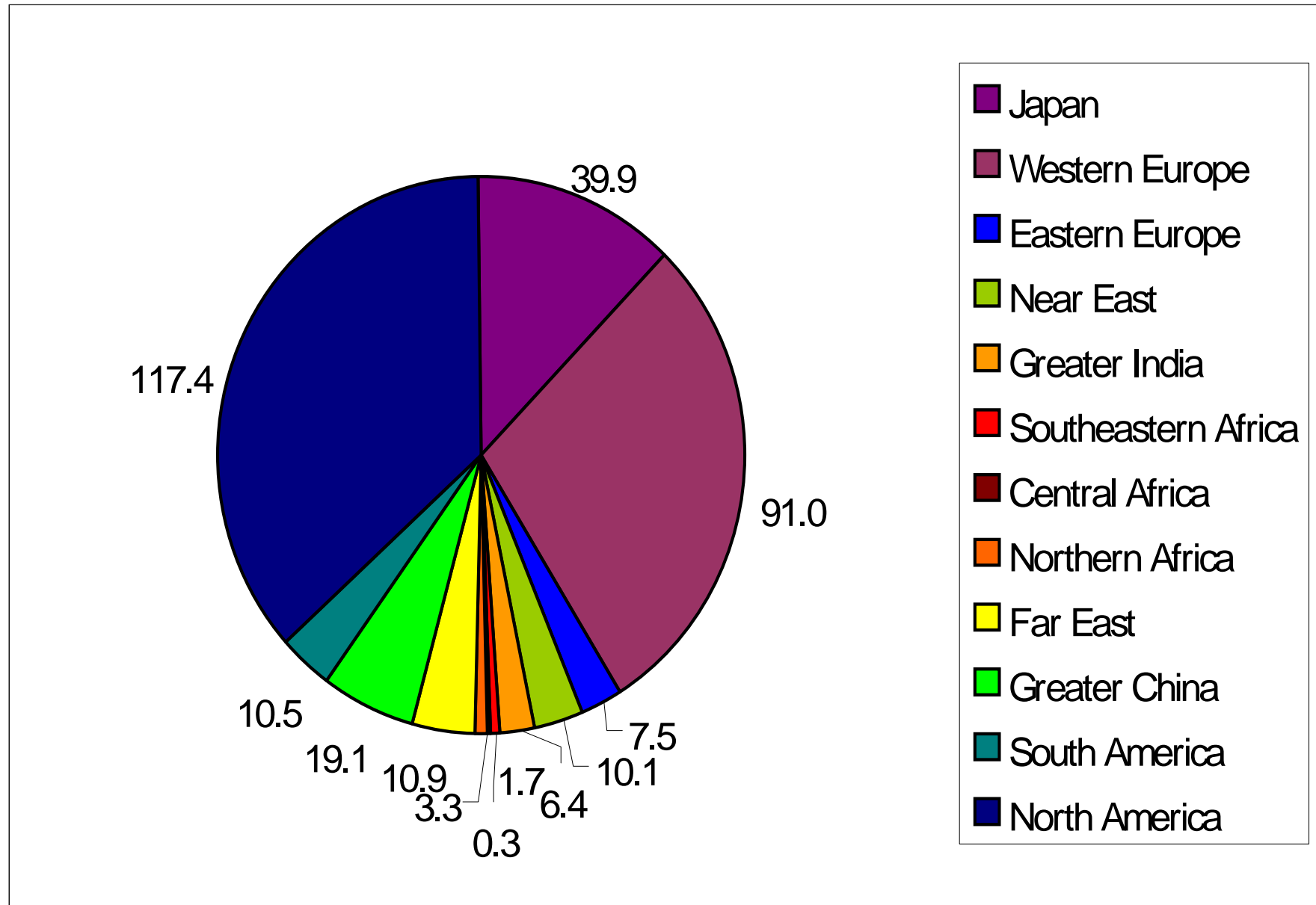




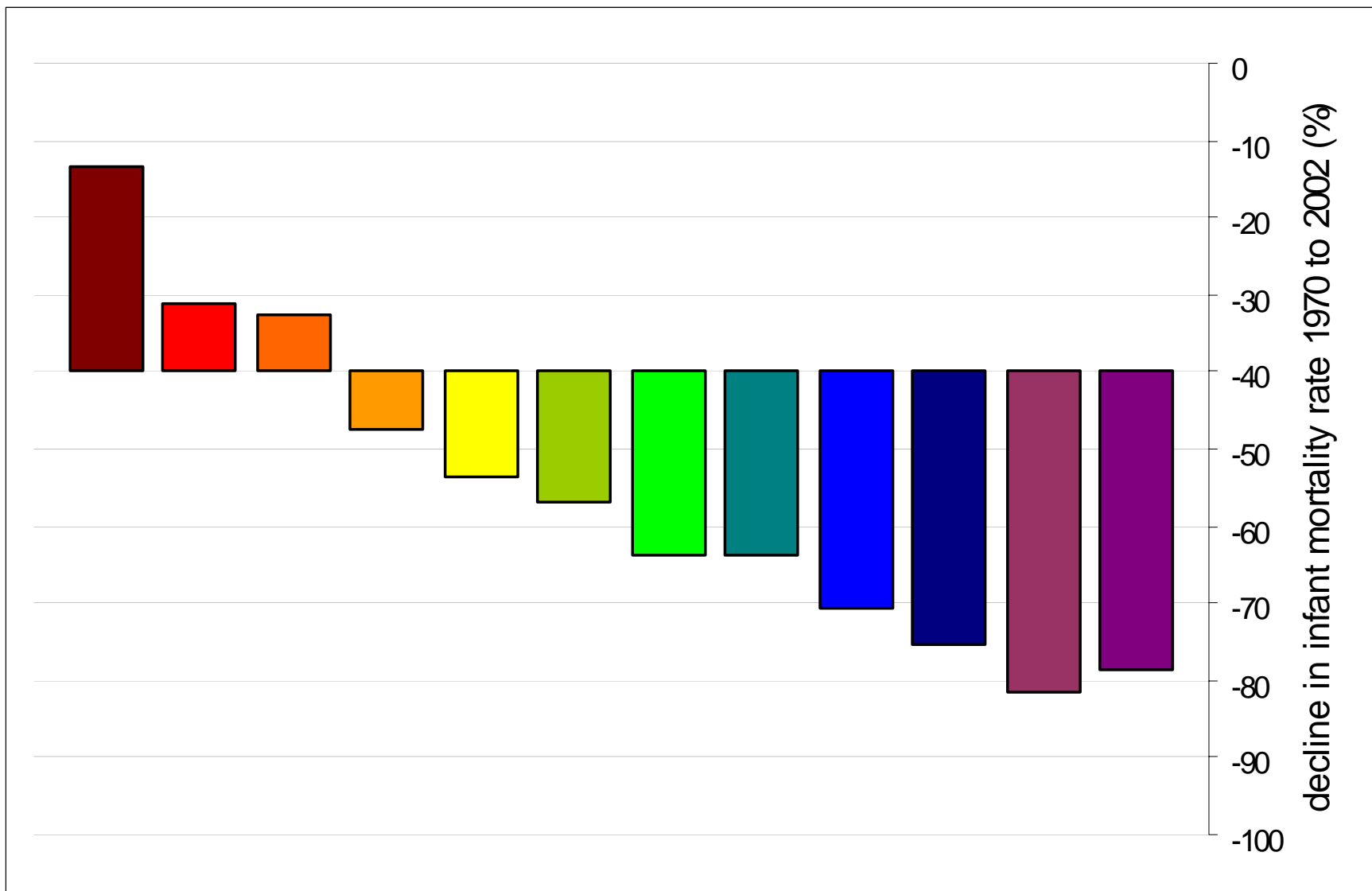
# HIV prevalence, ages 15-49 (millions 2003)



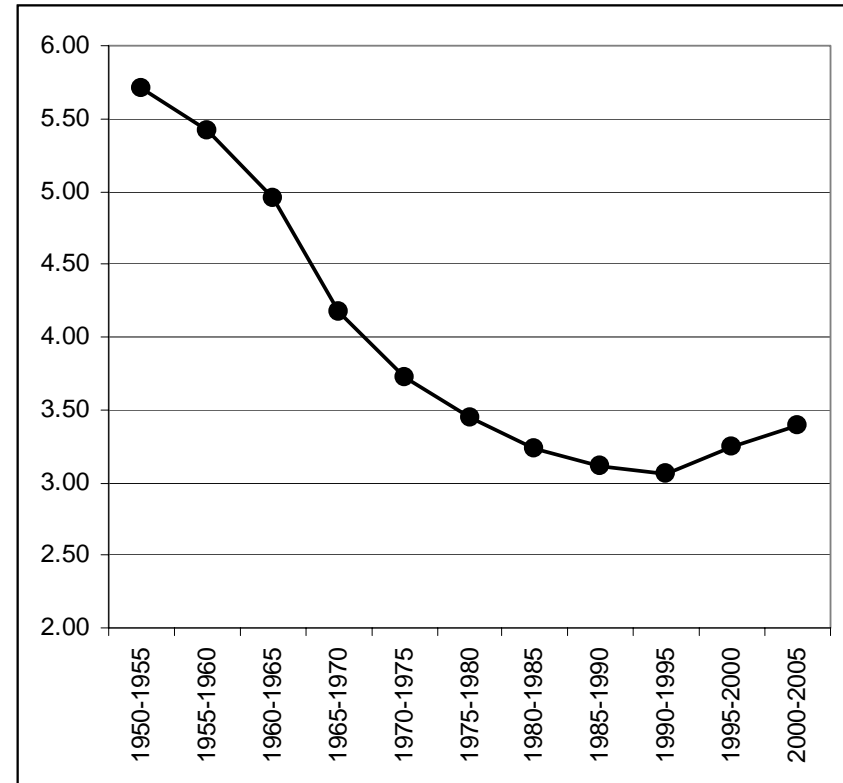
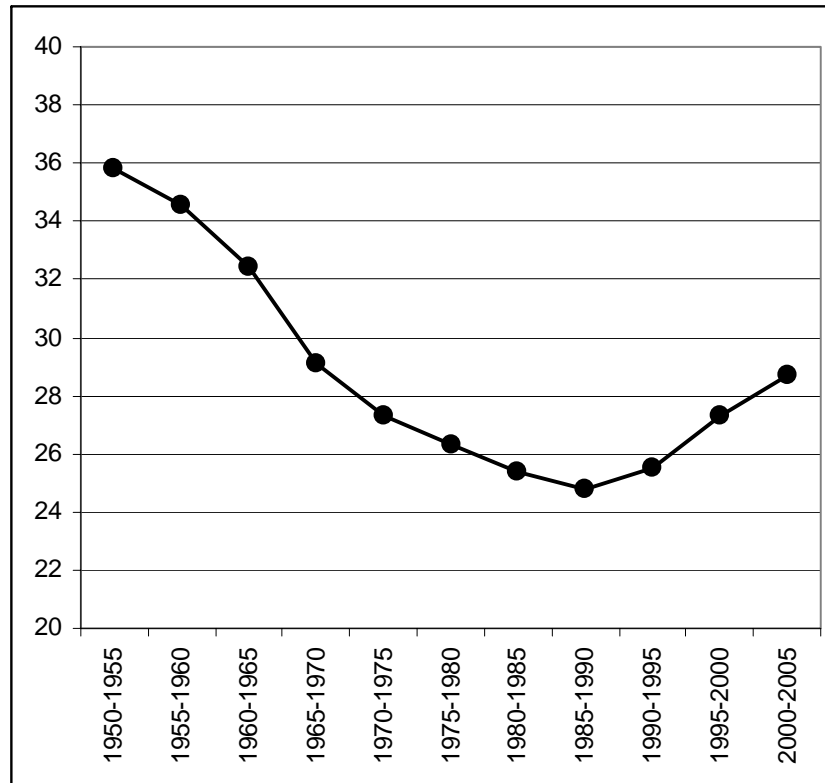
# GDP US\$ billions 2002



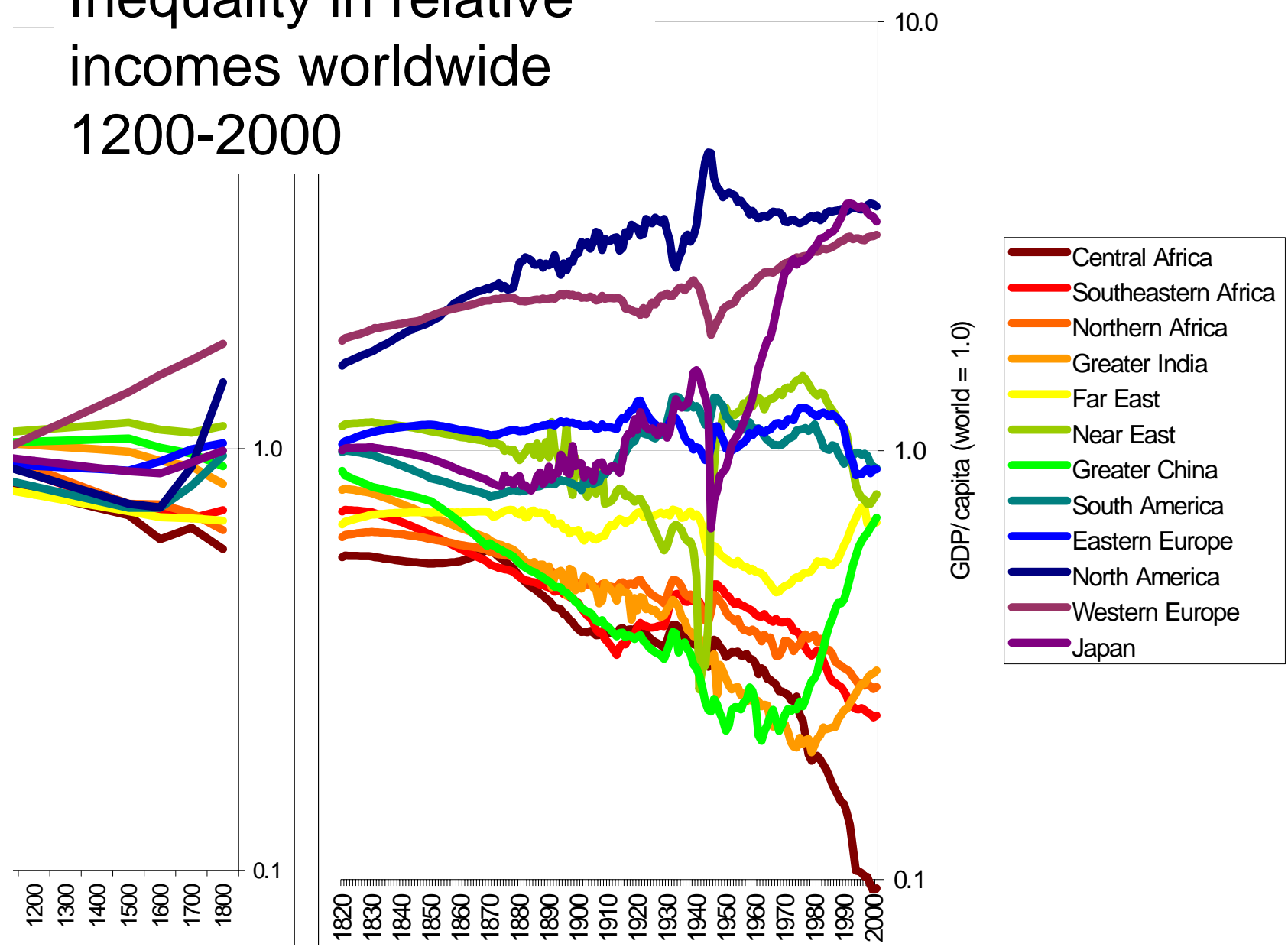




# The Slope & Dispersion Index of Inequality – World Life Expectancy 1950-2005



# Inequality in relative incomes worldwide 1200-2000



# *Conclusion*

This talk has draw on new data made available in recent years locally and globally. Most results are unpublished, but some are in “People and Places” and more analysis of the changing social makeup of one country is now published in “The Human Geography of the UK” (Sage, 2005); see [www.shef.ac.uk/sasi](http://www.shef.ac.uk/sasi) for more information.

Locally, in the UK rates of poverty have risen as increased affluence has been accompanied by increased inequality (perhaps not most recently). World-wide, inequalities in income and health are widening. In rich nations the future looks most bleak for younger men who do not succeed – however success is measured. In poorer nations the future is most bleak for children.